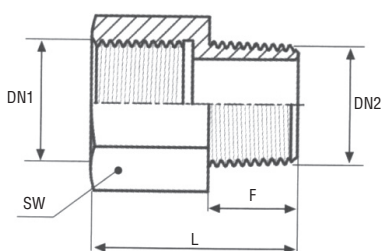


Art. 1258

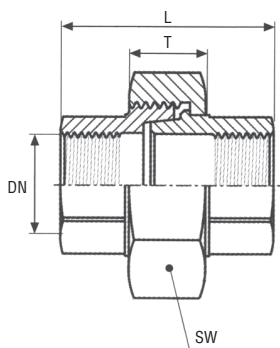
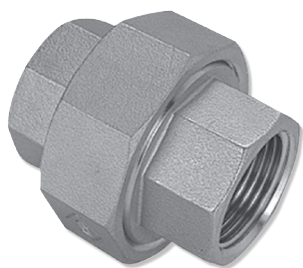
MANICOTTO MF (PROLUNGA)



Articolo	DN1 inch	DN2 inch	L mm	F mm	SW mm	PESO g/cad
1258C	1/4"	1/8"	27	10.8	17	23
1258D	1/4"	1/4"	28.5	12	17	26
1258E	3/8"	1/4"	30.5	11.9	21	38
1258F	3/8"	3/8"	31	12.3	21	43
1258G	1/2"	3/8"	34.5	12.3	26	64
1258H	1/2"	1/2"	37.5	14.6	26	73
1258J	3/4"	1/2"	38.5	15.6	32	102
1258K	3/4"	3/4"	41	17.5	32	280
1258L	1"	3/4"	44	17.5	38	127
1258M	1"	1"	46	20.1	38	300
1258N	1"1/4	1"	47	20	50	240
1258P	1"1/4	1"1/4	49	22	50	389
1258Q	1"1/2	1"1/4	50	22.3	54	263
1258R	1"1/2	1"1/2	51	23.5	54	400
1258S	2"	1"1/2	54	23.1	68	533
1258T	2"	2"	57	26.5	68	537

Art. 1260

GIUNTO 3 PEZZI FF SEDE CONICA



Articolo	DN	DN inch	L mm	T mm	SW mm	PESO g/cad
1260A	6	1/8"	29	13.5	25	54
1260B	8	1/4"	37.5	13.5	30	101
1260C	10	3/8"	38	15.5	35	128
1260D	15	1/2"	42	17	42	198
1260E	20	3/4"	49	19	47	275
1260F	25	1"	48	20.5	53	314
1260G	32	1"1/4	59	23	71	737
1260H	40	1"1/2	65	26	77	815
1260L	50	2"	69	28.5	92	1221
1260M	65	2"1/2	80	28.5	112	1879
1260N	80	3"	88	30	126	2591
1260P	100	4"	108	38	157	4340