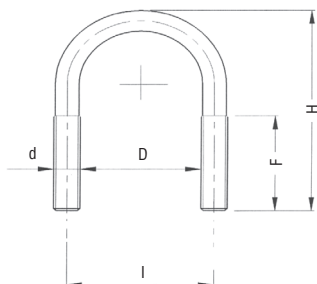
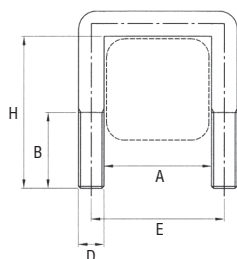


Art. 935
CAVALLOTTI INOX PESANTI AISI 316


Articolo	TUBO	D	d	L	F	H	I	PESO gr
935DA4	1/2"	22	M8	99	25	55	30	10.3
935EA4	3/4	27	M8	114	25	59	35	11.0
935FA4	1"	34	M8	130	25	67	42	12.2
935GA4	1" 1/4	43	M8	155	25	75	51	13.6
935HA4	1" 1/2	49	M10	178	36	87	59	12.8
935LA4	2"	61	M10	210	36	99	71	14.2
935MA4	2" 1/2	77	M10	251	36	115	87	16.4
935NA4	3"	89	M10	282	36	127	99	17.9

DADI E RONDELLE A RICHIESTA

L = sviluppo lineare del cavallotto (mm)

CAVALLOTTI INOX
Art. 937
CAVALLOTTI QUADRI AISI 316


Articolo	A (mm)	D (mm)	H (mm)	E (mm)	B (mm)	PESO (gr/cad)
937C	42	10	60	52	30	86
937D	52	10	70	62	30	101
937E	62	10	85	72	30	121
937F	72	12	95	84	30	197
937G	82	12	105	94	30	219
937H	92	12	115	104	30	240
937I	102	12	125	114	30	262
937J	122	12	145	134	30	305
937K	142	16	175	158	45	660
937L	162	16	195	178	45	738
937M	182	16	215	198	45	816
937N	202	16	235	218	45	894