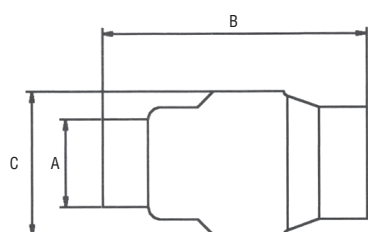




AISI 304



| Articolo | DN  | DN inch | A mm | B mm | C mm | PESO g/cad |
|----------|-----|---------|------|------|------|------------|
| 1202A    | 8   | 1/4"    | 18   | 55   | 32   | 94         |
| 1202B    | 10  | 3/8"    | 20   | 55   | 32   | 91         |
| 1202C    | 15  | 1/2"    | 25   | 55   | 32   | 93         |
| 1202D    | 20  | 3/4"    | 29   | 70   | 44   | 129        |
| 1202E    | 25  | 1"      | 36   | 84   | 53   | 191        |
| 1202F    | 32  | 1"1/4   | 45   | 99   | 62   | 281        |
| 1202G    | 40  | 1"1/2   | 51   | 119  | 78   | 388        |
| 1202H    | 50  | 2"      | 64   | 123  | 89   | 704        |
| 1202L    | 65  | 2"1/2   | 80   | 147  | 113  | 1425       |
| 1202M    | 80  | 3"      | 93   | 166  | 132  | 2085       |
| 1202N    | 100 | 4"      | 120  | 193  | 167  | 3415       |



Valvola di ritegno in acciaio inox tornito (Dim. 1/4" - 3/8" - 1/2")  
 Valvola di ritegno in acciaio inox stampata (Dim. 3/4" - 1" - 1" 1/4 - 1" 1/2 - 2" - 2" 1/2 - 3" - 4")

- Corpo e parti metalliche in acciaio inossidabile AISI 304
- Tenuta: FPM
- Connessioni filettate femmina: ISO 228/1 (ex DIN 259) femmina cilindrica
- Pressione di apertura max: 0,03 bar
- Pressione di lavoro: 16 bar
- Temperatura di esercizio: -20°C ÷ +150°C

DIAGRAMMA PRESSIONE-TEMPERATURA (1/4" ÷ 1/2")

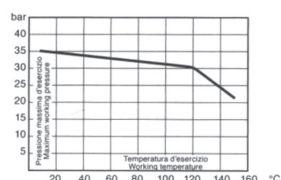
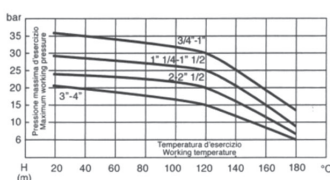
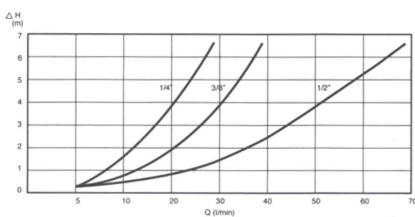


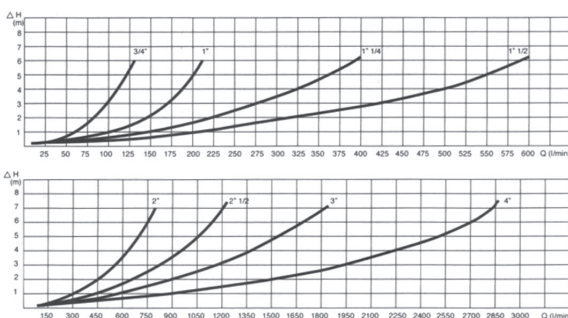
DIAGRAMMA PRESSIONE-TEMPERATURA (3/4" ÷ 4")



DIAGRAMMI PERDITE DI CARICO (1/4" ÷ 1/2")



DIAGRAMMI PERDITE DI CARICO (3/4" ÷ 4")



VALVOLE INOX